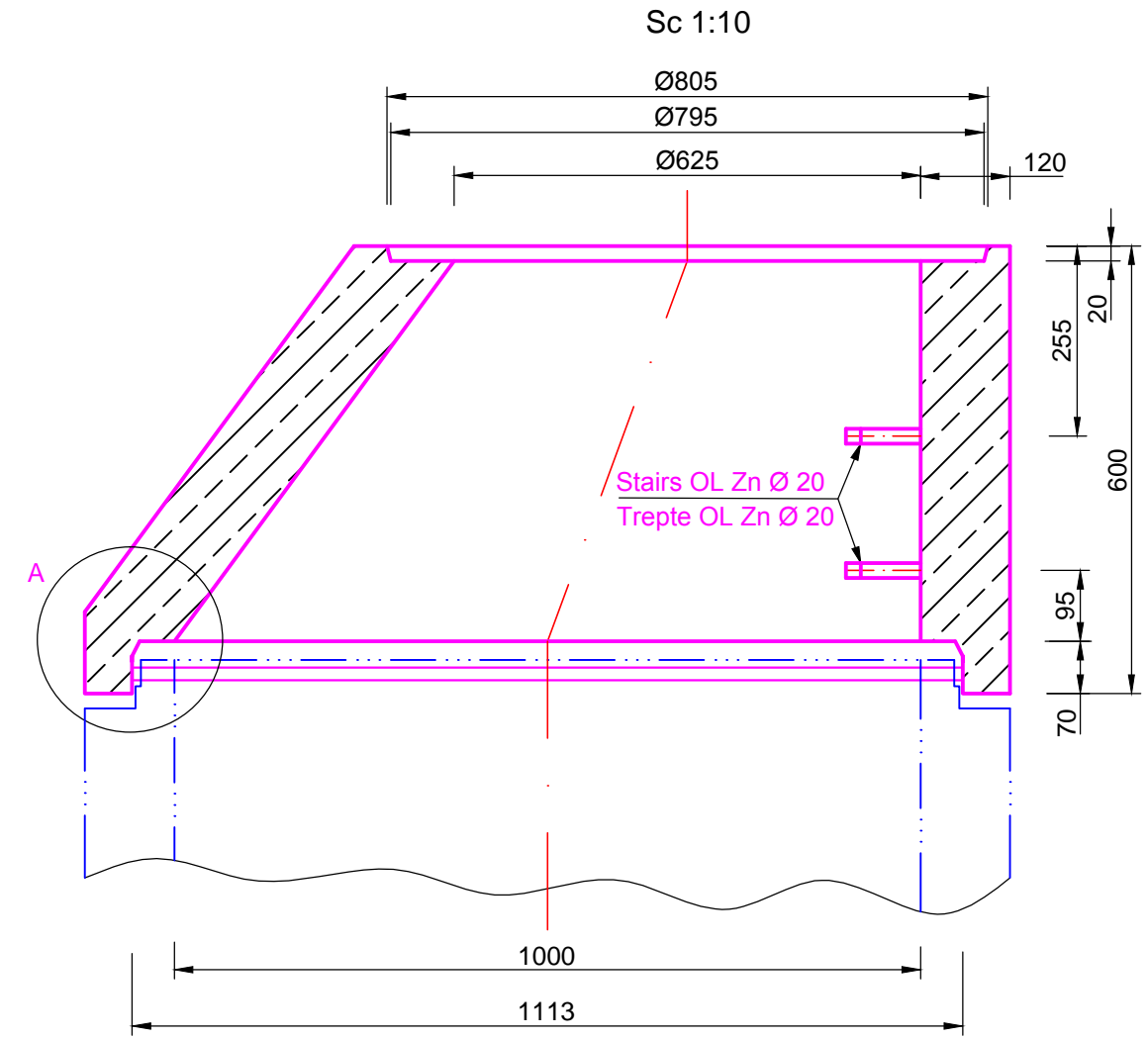
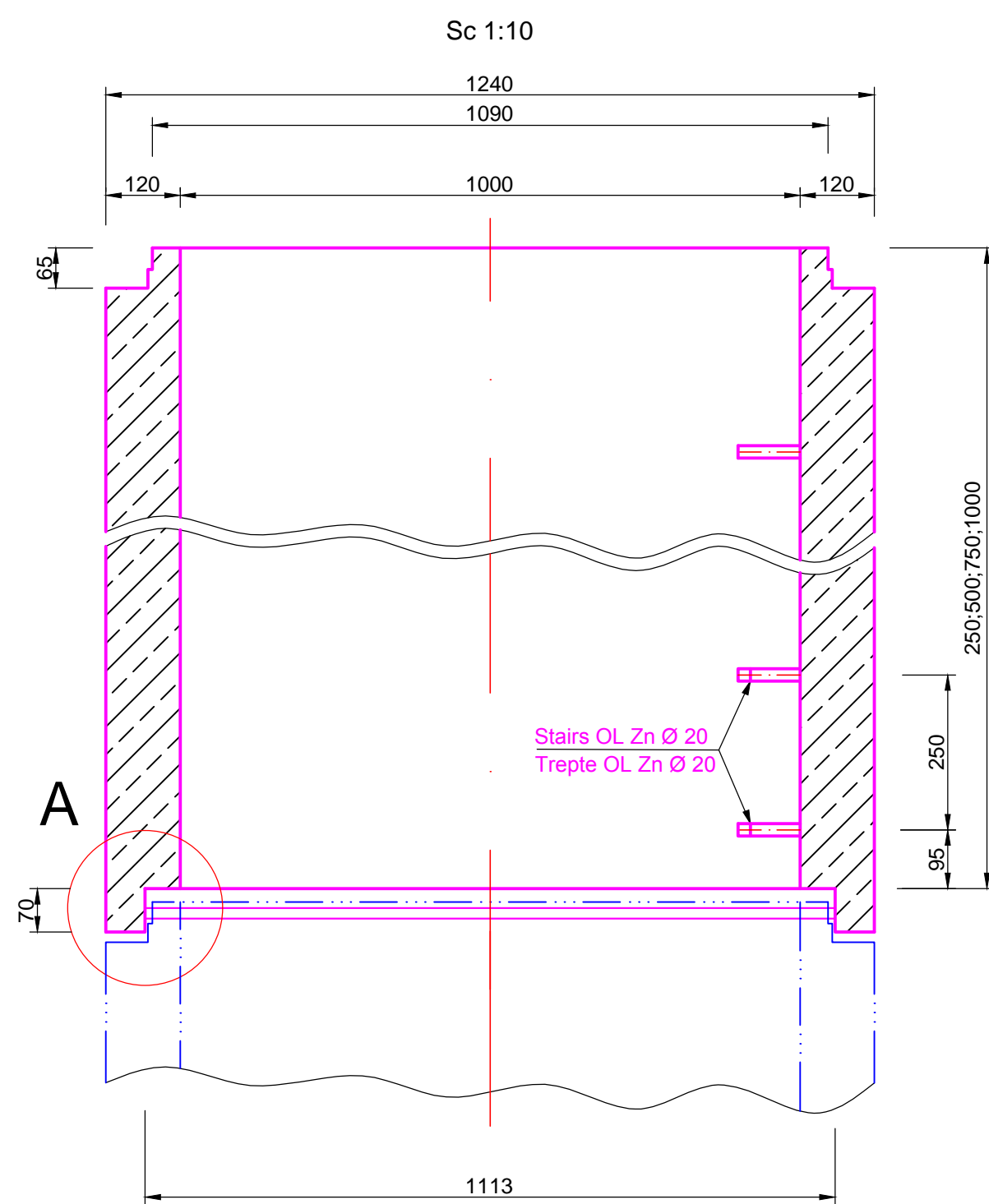


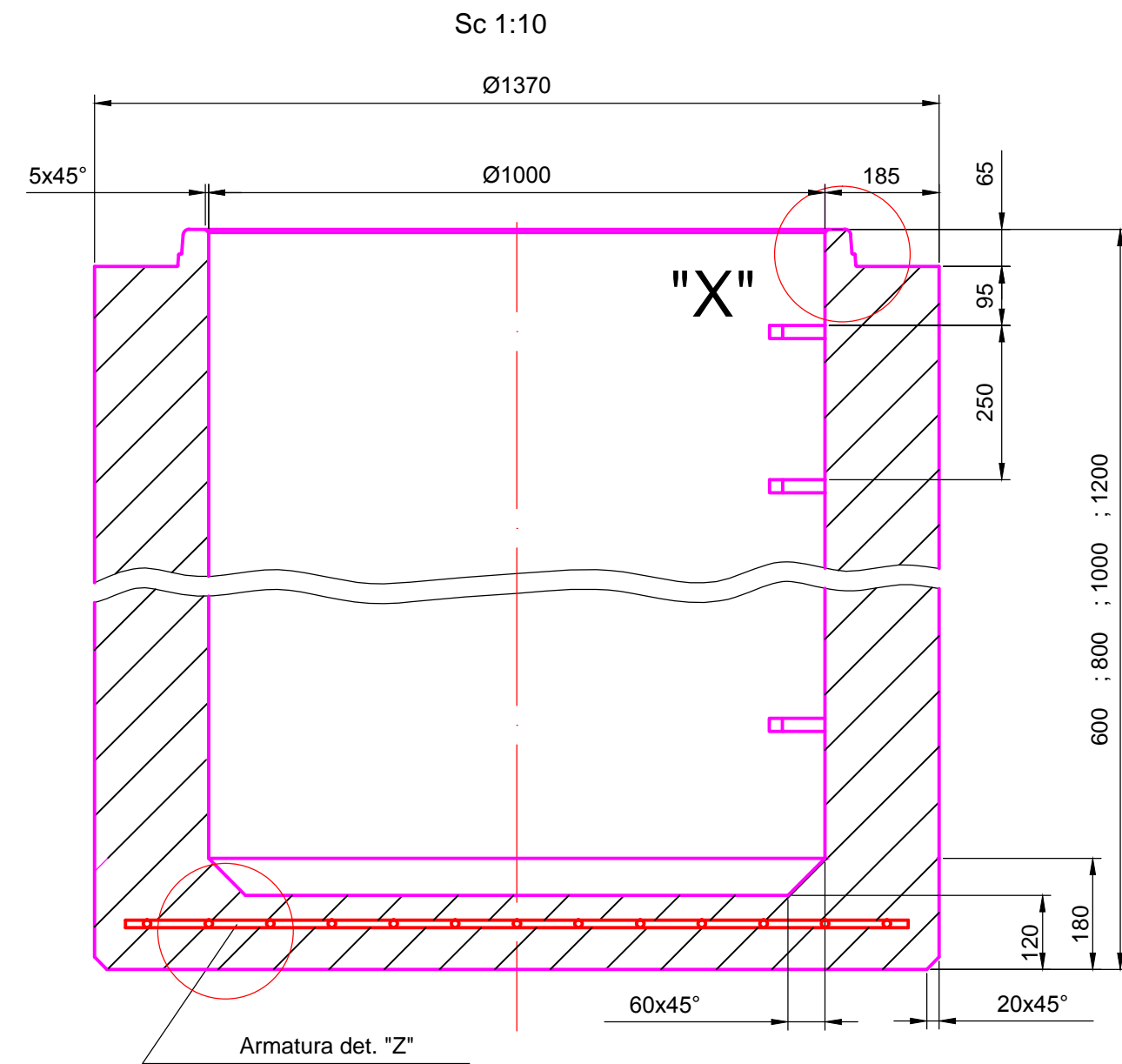
ELEMENT DE REDUCTIE (CAP TRONCONIC)



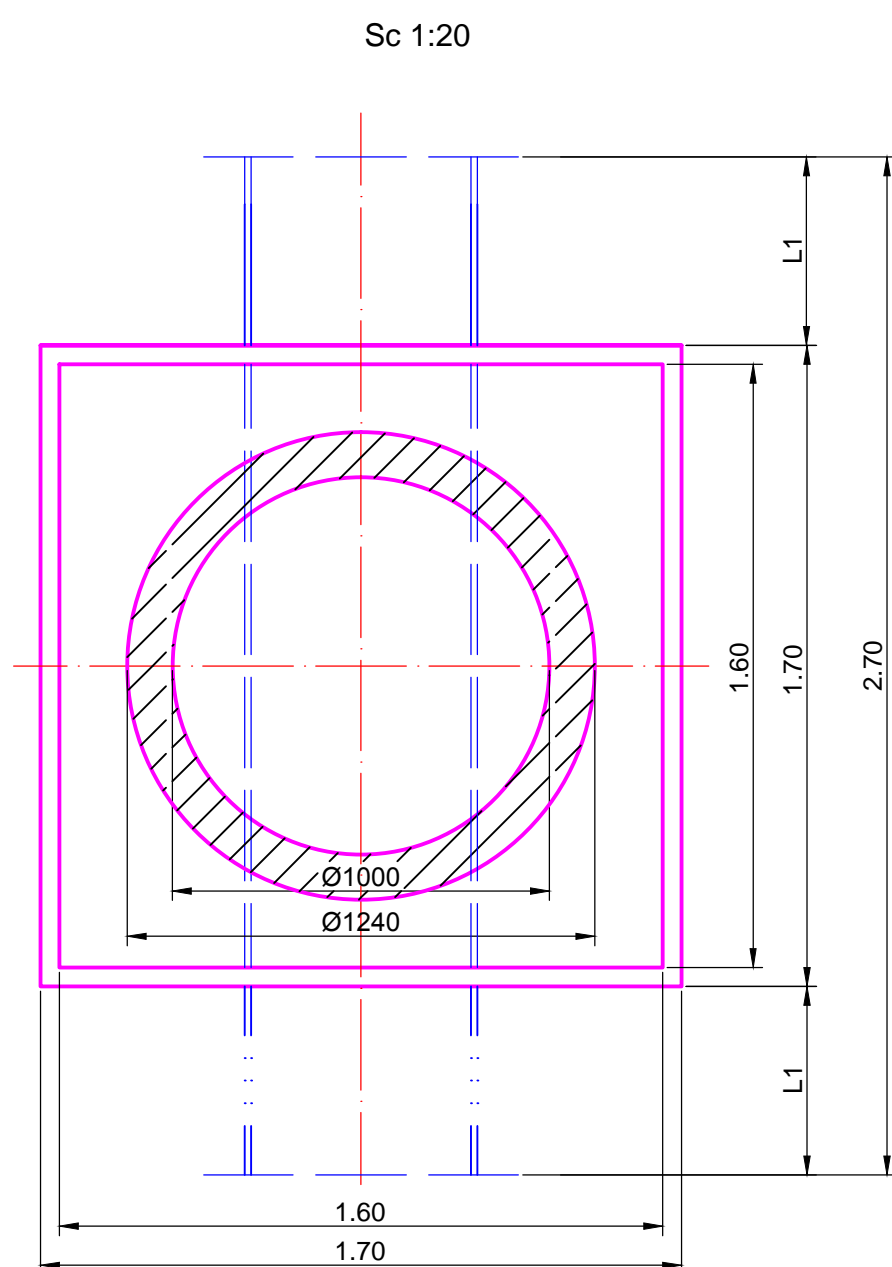
ELEMENT DREPT CU TREPTE (INEL)



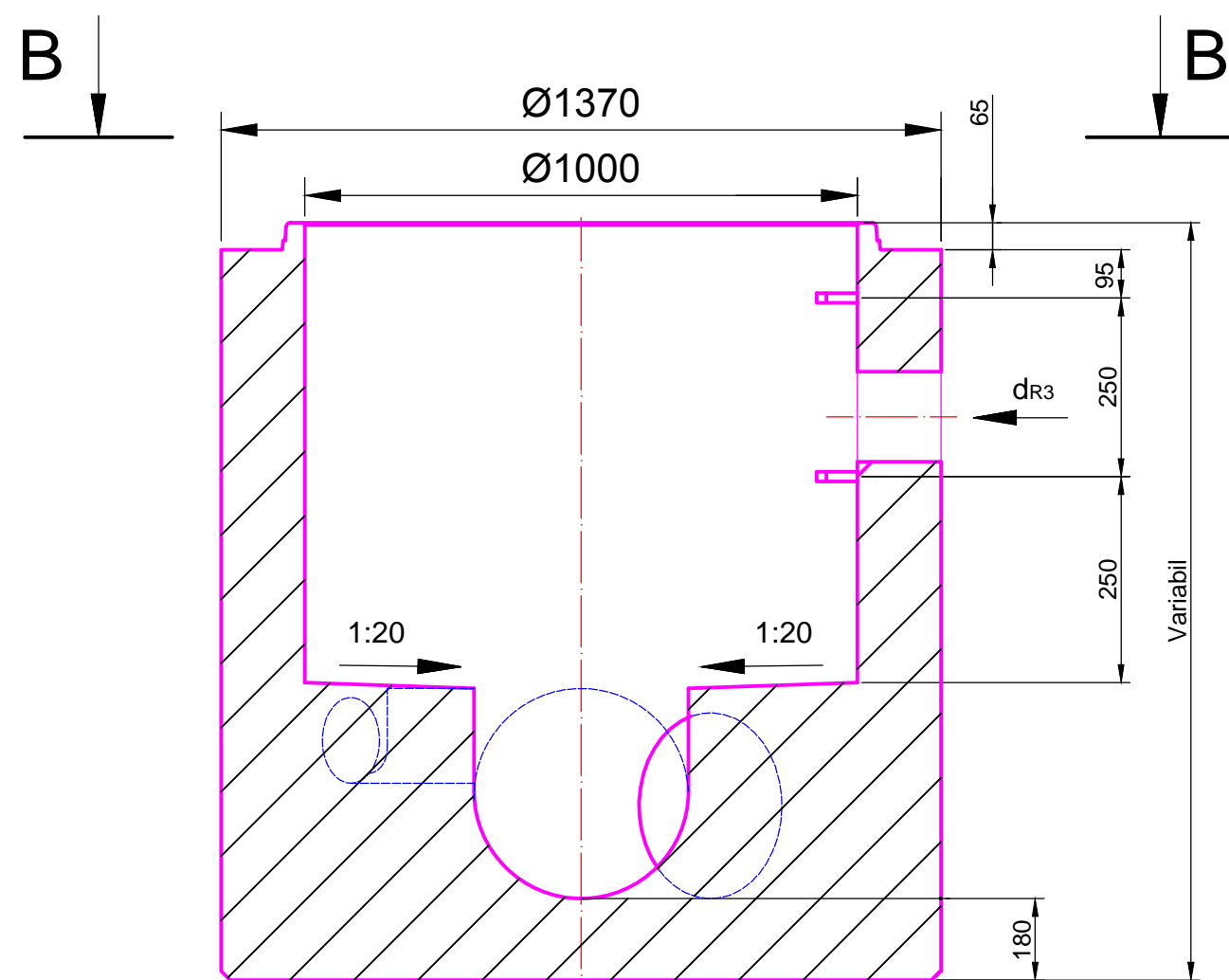
ELEMENT DE BAZA CU TREPTE



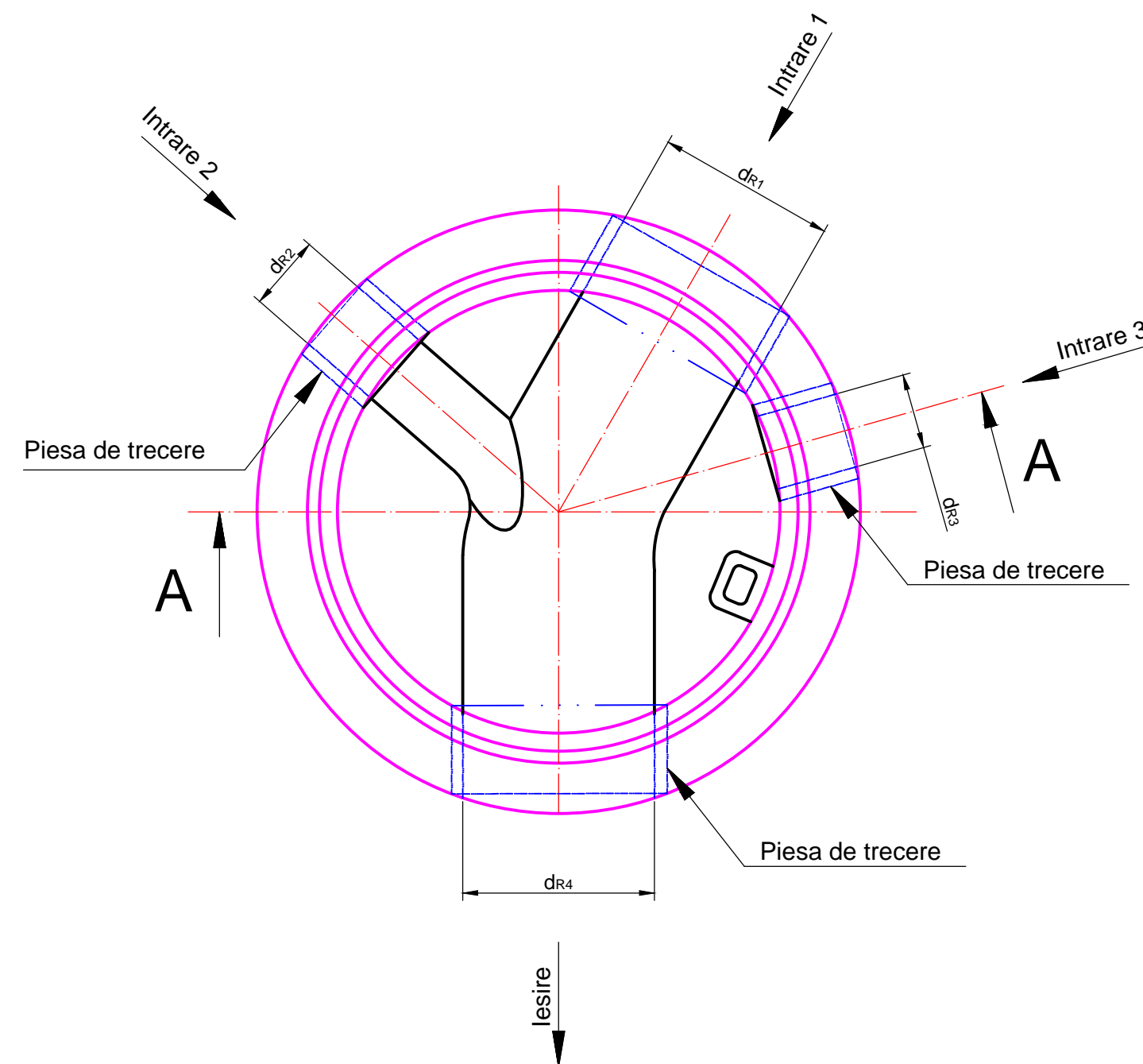
VEDERE CAMIN PENTRU CANALIZARE. SCHITA DE PRINCIPIU.



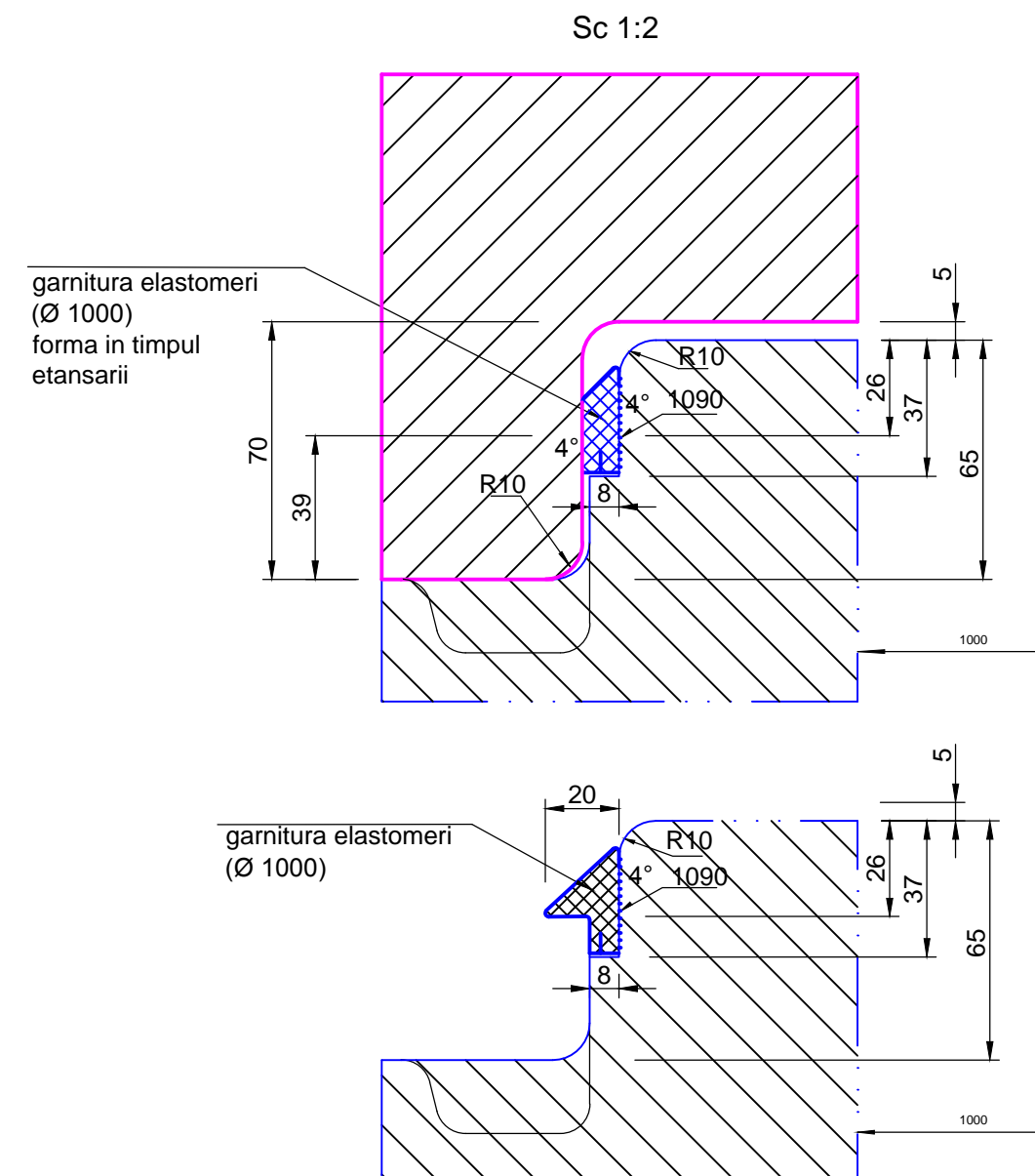
SECTIUNE A - A



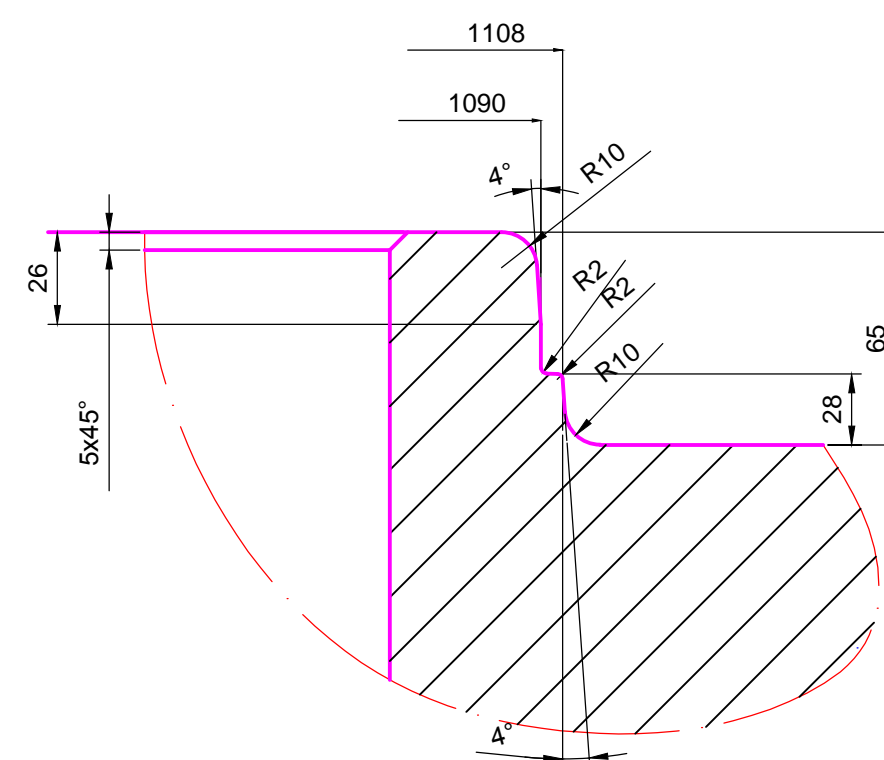
VEDERE B - B



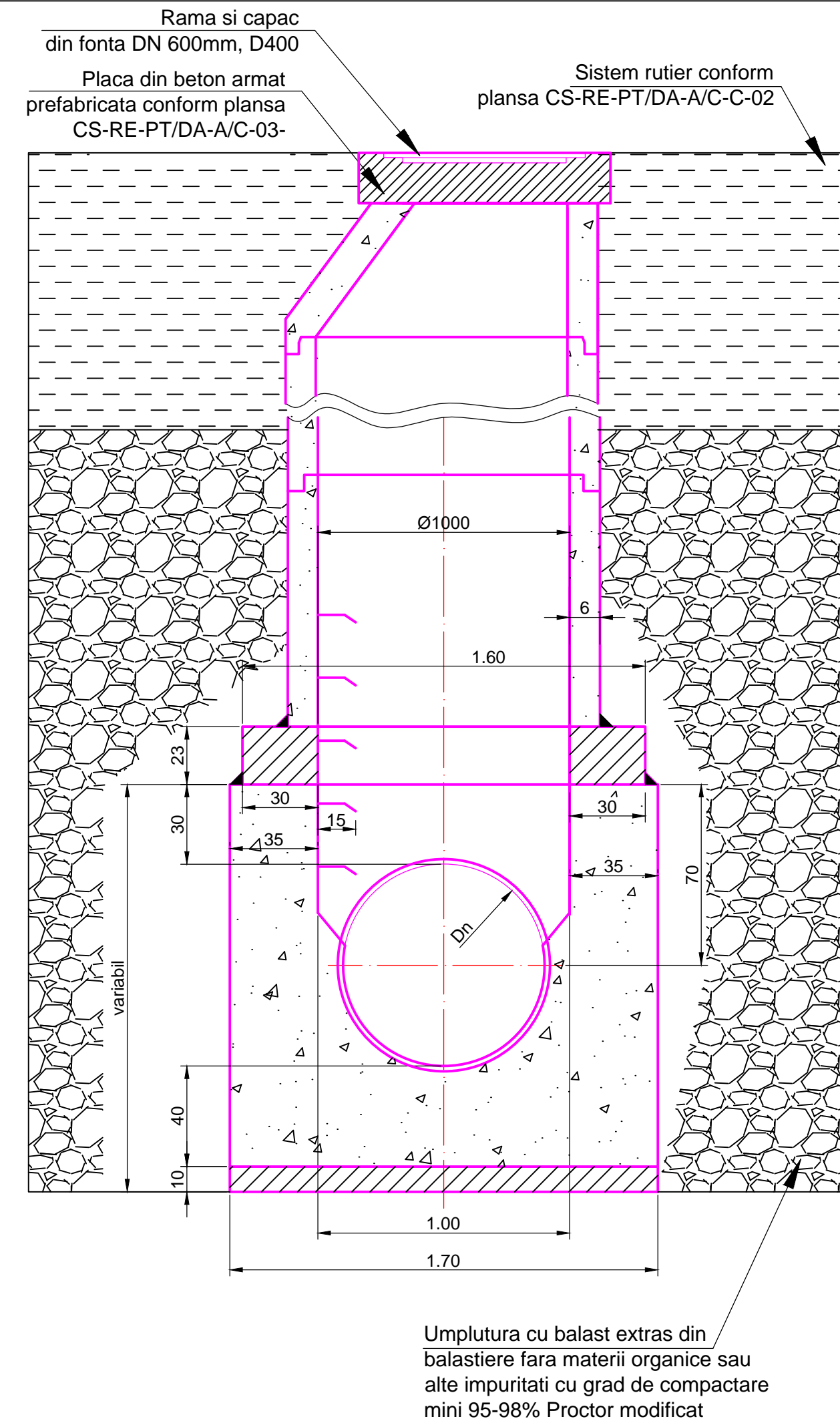
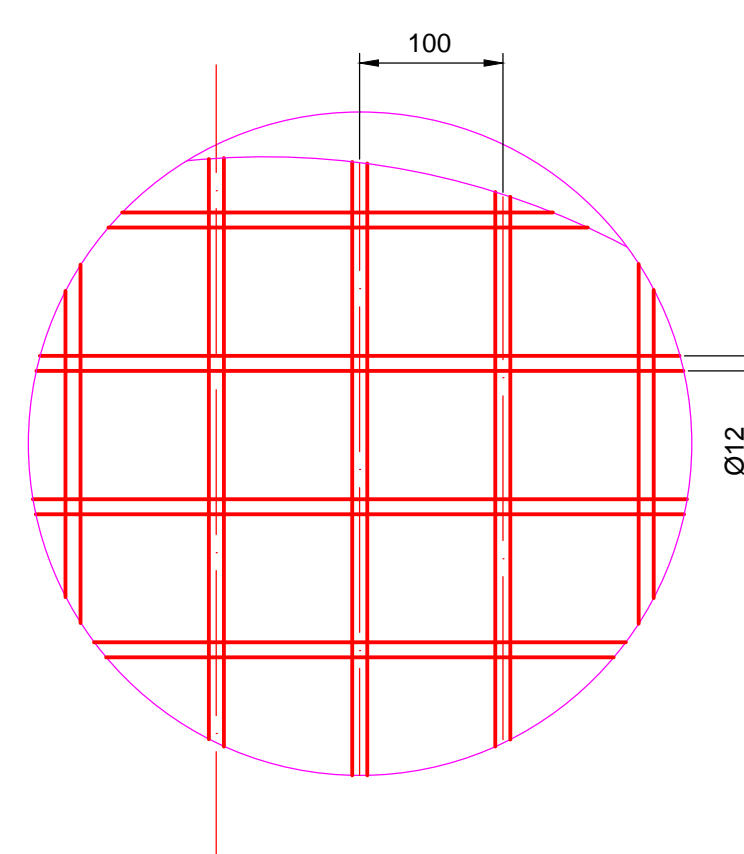
DETALIUL A



DETALIUL "X"



DETALIUL "Z"



NOTA:

- Caminele de vizitare tip, prefabricate, sunt in conformitate cu prevederile SR EN 1917:2005; SR EN 1917:2005/AC 2008 "Camine de vizitare si camine de racord sau inspectie de beton simplu, neton slab armat si beton armat" si prevederile tehnice ale furnizorului decamine de vizitare.
- Elementele de trecere prin camin: Piesa de trecere prin camin pentru tuburi de canalizare cu Dn 250 - Dn 1000 mm, in conformitate cu tipul de tuburi de canalizare utilizate.
- Treptele de acces se inglobeaza in prefabricat de catre producator.
- Capacele si ramele din fonta sunt conform EN 124:1996, STAS 2308-91 Tip III B si IV, functie de categoria strazii.

Rev	Num	Ver	Aprb	Data	Descriere
Autoritatea contractanta: S.C.AQUACARAS S.A. CARAS SEVERIN					
<p>Proiectant: S.C.AQUACARAS S.A. CARAS SEVERIN</p> <p>S.R.L. si Eptisa Servicos de Ingenieria S.L.</p> <p>Sos. Dudaş-Pantelimon nr. 42, RAMS center, et. 5, corp A.</p> <p>Sector 3, Bucureşti</p> <p>Tel: +40 205 212 438</p> <p>Fax: +40 205 214 431</p> <p>E-mail: office@aquacaras.ro</p>					
Proiect: MODERNIZAREA INFRASTRUCTURII DE APA SI APA UZATA IN JUDETUL CARAS SEVERIN - AGLOMERAREA RESITA					
Planşa nr. 0					
Scara planşa: -					